



### JANUS Technology Manager

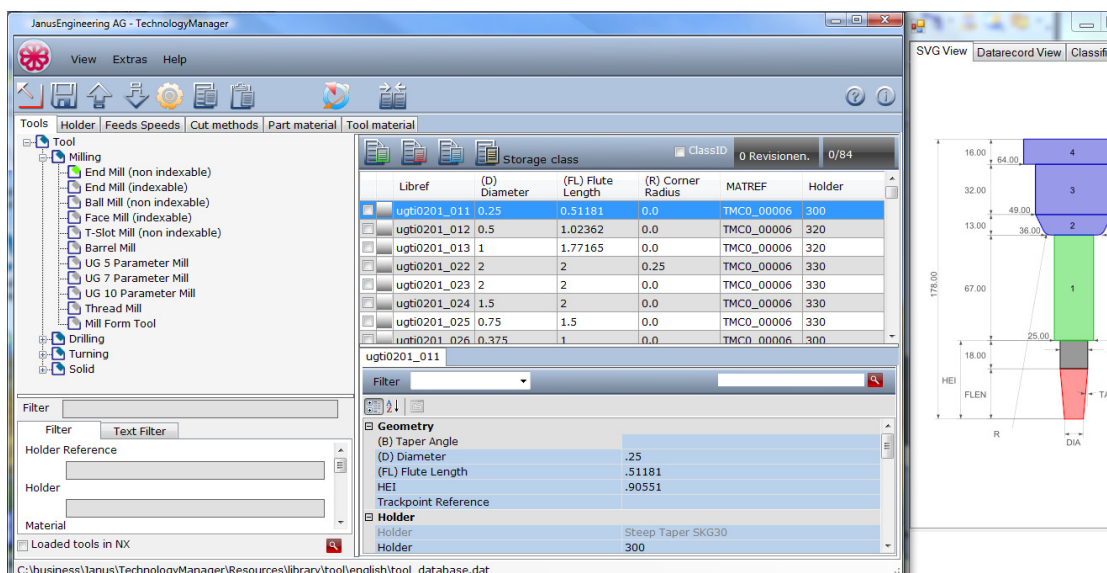
Janus Technology Manager is an administrative program for tools, tool holders, feeds, speeds, data and other external technology that can be used in NX (via ASCII data tables). To manage these tables within NX is not always efficient. Modifying these tables outside NX is cumbersome and prone to error.

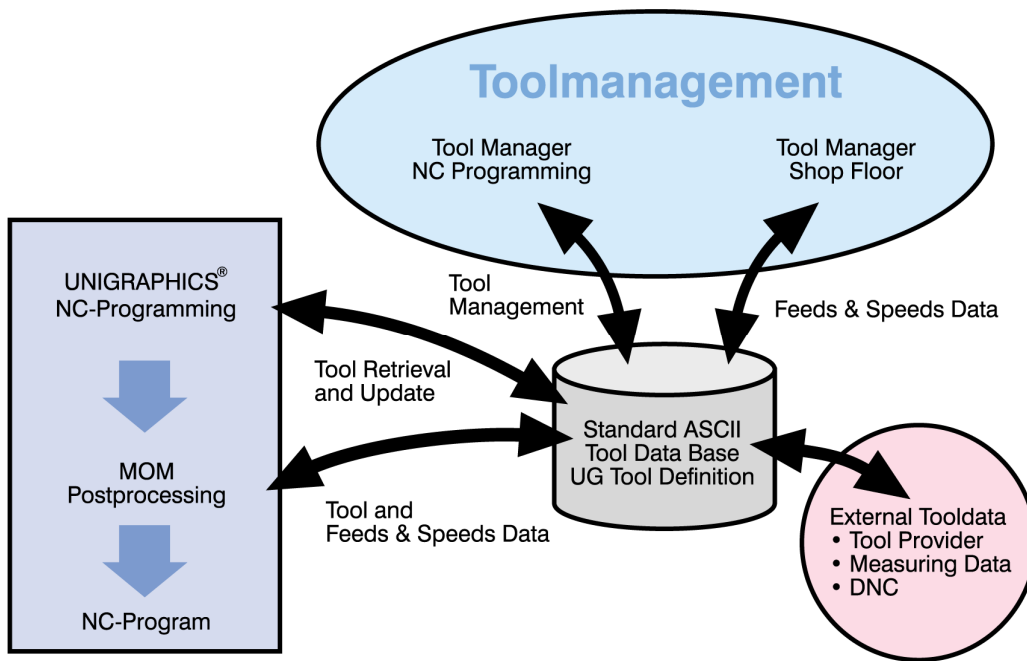
Technology Manager offers the management of this data with optimal graphical feed back and state of the art functionality. The program reads the NX ASCII data directly and allows modification similar to a relational database. Dependencies between informational items are handled easily. The modification of the data is in real time, i.e. the modifications are immediatly available in NX. The system is fully compatible to the NX data structure.

The program provides easy to use functions, which guarantees integration within the CNC programming task. This includes all availability data needed within the CNC programming.

- Fast searching capabilities within large data tables
- Management of components, holders for tools
- Management of technology data and their association with the tools along with other criteria (Material, methods, but also loaded machine, depending on part attributes or UDE set)
- Management of additional non geometric data
- Direct interface to the active NX session
  - viewing the tools currently active in NX
  - direct loading of tools from the Technology Manager into NX
  - update loaded tools in NX
- Dynamic display of tools (scaled to the actual dimensions)
- Categorizing of the tool attributes
- Automatic creation of 3D tools
- Output tool lists in Word/Excel format incl. 2D graphics
- Import external tool tables represented in Excel data tables.

The tool and technology data can be managed by users outside of an NX session.





*Prerequisites:*

Toolmanager base system on Windows 2000 / XP / 7.  
NX version 4+.

*Demo:*

A demo version can be requested via email at [info@janus-engineering.de](mailto:info@janus-engineering.de)

*Other:*

The adaptation of the NX® structure to the user requirements is necessary, i.e. definition of tool attributes, types of tools, classification, etc.  
We offer this as additional consulting services or as a one day training class in one of our training centers. In this training we explain these NX® structures for giving you the ability to make your own customer specific changes.

If you acquire postprocessors from us, we adopt them automatically to this tool management. Also old postprocessor can be supplemented with little effort.