

## Ergonomic user interfaces in production

With the HumanInterface there is a new flexible interface for the user to interact with the system, which makes it a central part of the modularly configured FIT software package (**Factory Integrating Tool**).

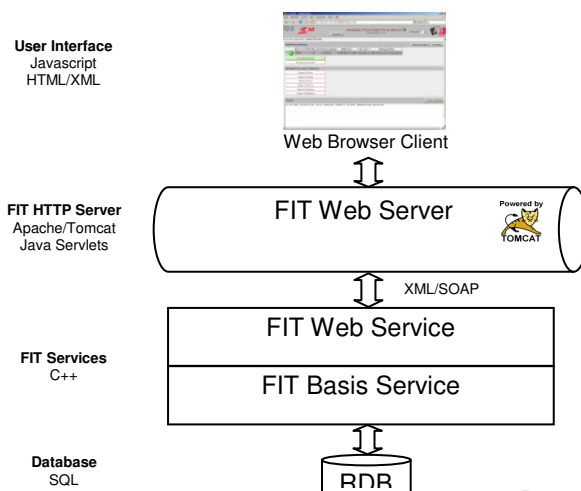
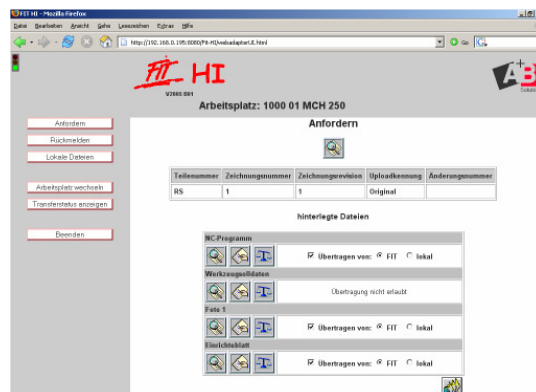
The HI is the access and user interface for all functions. In this case it is irrelevant whether you query production resources, enter machinery data or transfer NC programs to machine controls. With this intuitively usable tool each person in the company can immediately query the situation and make status changes himself or herself. Furthermore, corresponding messages for production orders, such as quantity or time messages, can be dispatched and handed over to the ERP system via the HumanInterface.

### Goals

The HI is an interface that makes it possible to extensively and simply provide the information for product data in an up-to-date and electronic form. This should therefore make a further contribution in terms of reducing the manual administrative costs of, for example, making printouts and ensuring quality. Furthermore, the commercial information for production orders, products and work stations become transparent.

### Technology

The HumanInterface is based on the latest technologies, such as Java, XML and SOAP. This means investment protection is guaranteed independent of the platform. The module is connected to an existing FIT instance via SOAP using FIT Web Services. As the innovative application has been programmed in pure Java,



## Flexible frontend for a whole host of requirements

can also be installed on a separate computer equipped with any operating system platform. It is operated via a standard browser.

### Benefits

- ✓ Uniform operating frontend for DNC operation, order acknowledgement or entry of machine and operating data
- ✓ Contribution to achieving a paperless production environment
- ✓ Possibility to query all production resources
- ✓ Data entry for production orders or work segments by logging in or out, interruptions and partial confirmations
- ✓ Notification of number of units produced and entry of wastage
- ✓ Notification of production times, set-up percentage and idle times or reasons
- ✓ Investment protection through the use of state-of-the-art standard technologies

### Application examples

The HumanInterface is the key basis for providing information on production resources and data entry throughout the whole company:

- ✓ Selection of parts data information based on a specific parts identity number
- ✓ Transfer of NC program or tool data directly to the machine control
- ✓ Acknowledgement of production orders or work steps
- ✓ Entry of malfunctions with duration and reason for the malfunction

