

## Ergonomic Information Interface for the Manufacturing Sector

The “FIT-HI-WebMenu-InfoCenter” is a new and flexible interface for managers in manufacturing, which can be used for retrieving all relevant information along the entire manufacturing process, making it another key component of the modular software package FIT (*Factory Integrating Tool*).

### Objectives

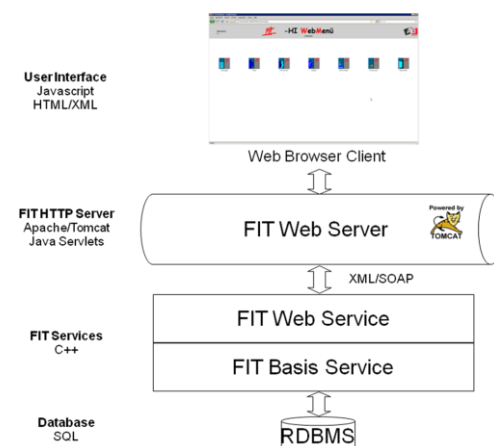
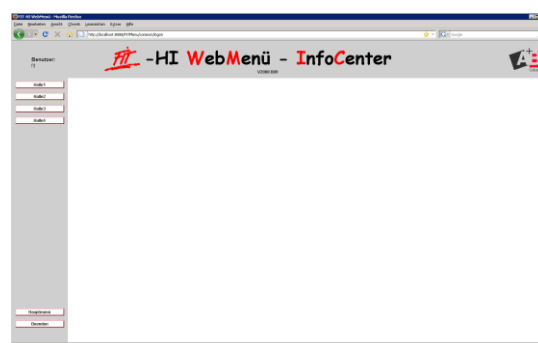
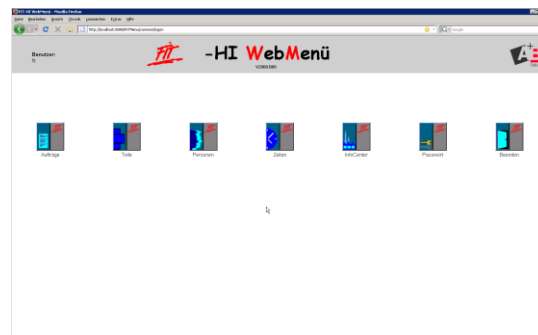
The “FIT-HI-WebMenu-InfoCenter” is a universal information interface that allows simple, rapid and comprehensive retrieval of information relating to product and order data, as well as the current status of the machines, which can then be made available in electronic format. It thus makes an additional contribution to the optimisation of manufacturing processes, as any disturbances can be identified and rectified quickly.

### Technology

The “FIT-HI-WebMenu-InfoCenter” is based on the latest technologies such as Java, SOAP and XML. Investments are therefore protected, irrespective of the platform in use.

The module is connected to an existing FIT instance via FIT Web Services using SOAP. As this innovative application has been programmed using Java, it can be installed on any computer, no matter what operating system is being used. The software is operated via a standard web browser.

Furthermore, in order to ensure that all manufacturing processes run smoothly, additional tried-and-tested indicators are being added to the system on an ongoing basis. The layout can also be customised in line with individual needs.



**Benefits**

- ✓ Uniform, integrated information front-end for DNC operations, which can record order information or machine and operation data.
- ✓ Helps to ensure smooth-running manufacturing processes
- ✓ Indicators included for recognising manufacturing disturbances quickly
- ✓ Overview of the status of all machines (manufacturing orders, work processes, employees who are logged on or off, recording of MDE data)
- ✓ Configurable interface for the classification and/or representation of your manufacturing environment in a wide variety of areas (manufacturing, assembly, incoming goods dept., etc.)

Investment protection through the use of modern standard technologies

**Application examples**

The “FIT-HI-WebMenu-InfoCenter” is an important element in the early recognition and representation of influences that effect manufacturing processes throughout the entire company:

- ✓ Manufacturing areas and individual workstations and/or machines can be selected
- ✓ Information platform for manufacturing managers
- ✓ Visualisation of the status of machines with order and parts information
- ✓ Service functions for attached end devices such as COMServer or WebIO

